



HeartSine™

samaritan® PAD

Public Access Defibrillator



- compact design
- lightweight
- easy to use
- INTEGRATED battery and pads
- biphasic SCOPE® technology*
- AHA/ERC 2005 compliant

Sudden Cardiac Arrest (SCA) is a leading cause of death globally. Response time is critical for surviving SCA, when every minute counts.

HeartSine's samaritan® PAD was designed especially for use in public areas by providing a sophisticated defibrillator inside a lightweight, easy-to-operate system.

HeartSine - "helping you... help someone."



HeartSine™

samaritan® PAD unit



Feature:

System weighs 2.4 lbs (1.1 kg)

Only 2 buttons—ON & SHOCK—accessible even in storage case

Clear, easy to understand visual and oral prompts

SCOPE® Biphasic escalating energy waveform (150/150/200J) & automatic impedance compensation

Benefit:

Lightweight

Straightforward to operate

Guides rescuer through each step in the process

Defibrillator automatically optimizes energy output, minimizing excess current - no adjustments required

Result:

Easy to carry and transport

Easy to use

Easy to understand

Provides significantly better performance in removing ventricular fibrillation (VF) by the third shock**

Pad-Pak™



Feature:

One Pad-Pak cartridge contains all system disposables – battery AND electrode pads

One expiry date – pads and integrated battery together

Pre-attached sensors provided in an easily accessible drawer

Benefit:

One Pad-Pak updates ALL expired components at once, quickly restoring system readiness

Provides assurance that all disposables are fresh with a new Pad-Pak

No wires to connect, and pads are accessible while in carry-case

Result:

Easy to maintain, with minimal replacement parts

No multiple dates or multiple components to check

Designed for emergency response and quick system access

*Self Compensating Output Pulse Envelope technology automatically compensates energy, slope and pulse envelope for the patient.

**Efficacy of Distinct Energy Delivery Protocols Comparing Two Biphasic Defibrillators for Cardiac Arrest,"Walsh, McClelland, Owens, Anderson, Turner, Adgey; The American Journal of Cardiology, Vol. 94, Aug.1, 2004



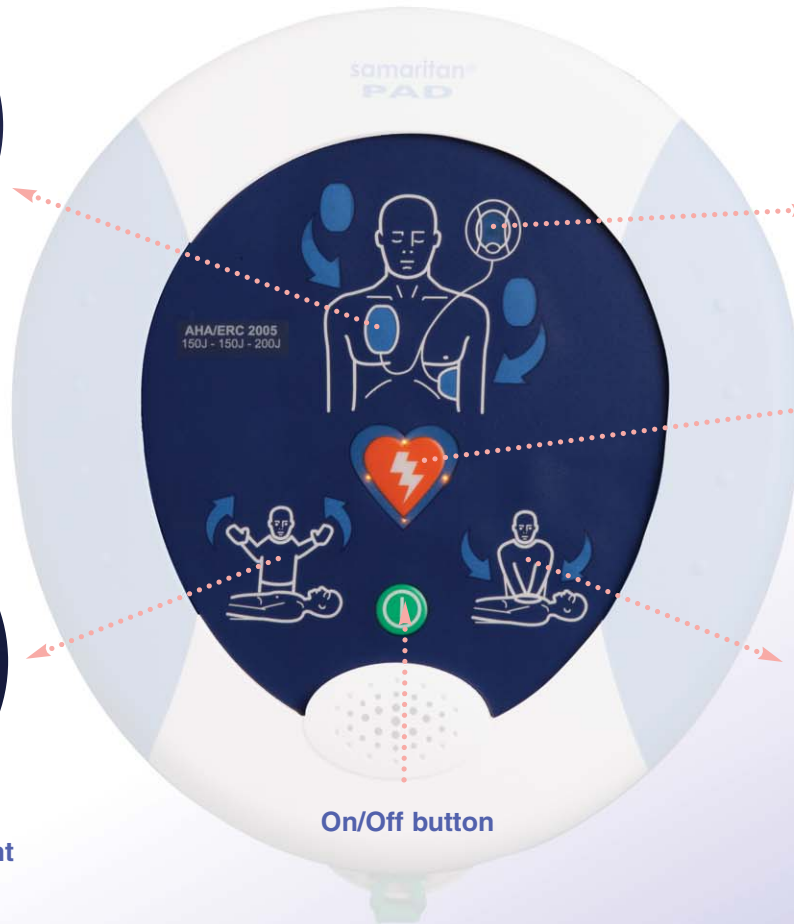
HeartSine™



Visual cues prompt pad placement



Stand clear of the patient



On/Off button

System Status Ready Indicator flashes, to show that complete system is operational

Press to deliver shock when prompted. Button illuminates.



It is safe to touch the patient

The samaritan® PAD system senses when pads are applied to the patient, and automatically analyzes heart rhythm, advises whether or not therapy should be applied, and delivers carefully defined electrical shock designed to return the heart to a normal rhythm.



